

Quick Installation Guide

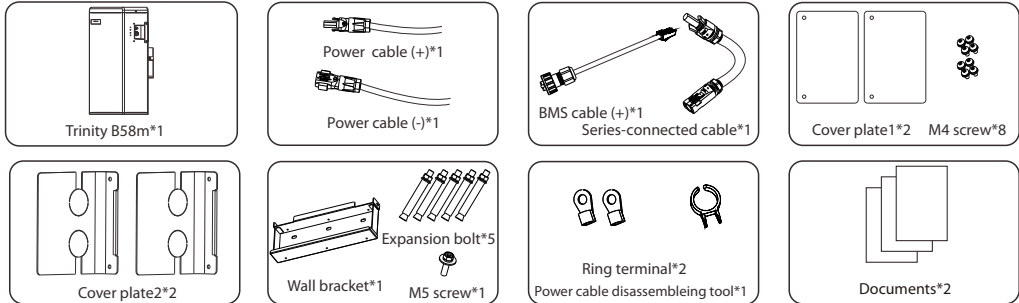
Trinity Lithium-ion Battery

I

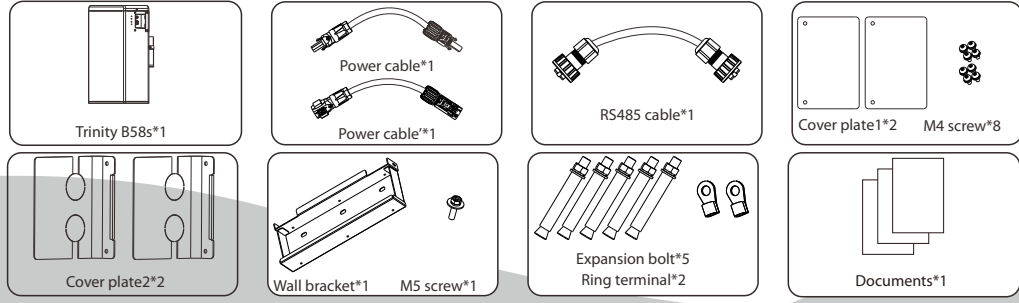
Packing List (Trinity B58m and Trinity B58s)

Note: The quick installation guide describes installation steps briefly. If you have any questions during the installation, please refer to the User Manual for more information.

Trinity B58m



Trinity B58s



II

Installation Prerequisites

Make sure that the installation location meets the following conditions:

- The building is designed to withstand earthquakes
- The location is far away from the sea, to avoid sea water and humid air
- The floor is flat and level
- There are no flammable or explosive materials nearby
- the ambience is shady and cool, keep away from heat and avoid direct sunlight.
- The ambient enironment is shady and away from heat as well as direct sunlight.
- The temperature and humidity stay at a constant level.
- There is minimal dust and dirt in the area.
- There is no corrosive gases present, including ammonia and acid vapor.
- The ambient temperature is within the range from 0°C to 55°C and the optimal ambient temperature is between 15°C and 35°C.

NOTE!

The Trinity battery is rated at IP65 and thus can be installed outdoors as well as indoors. However, if installed outdoors, do not expose the battery to directly sunlight and moisture.

NOTE!

If the ambient temperature is beyond the operating range, the battery pack will stop operating to protect itself. The optimal temperature range for the battery pack to operate is form 15°C to 35°C. Frequent exposure to harsh temperatures may deteriorate the performance and lifetime of the battery module.

NOTE!

For the first installation, the interval among manufacture dates of battery modules shall not exceed 3 months.

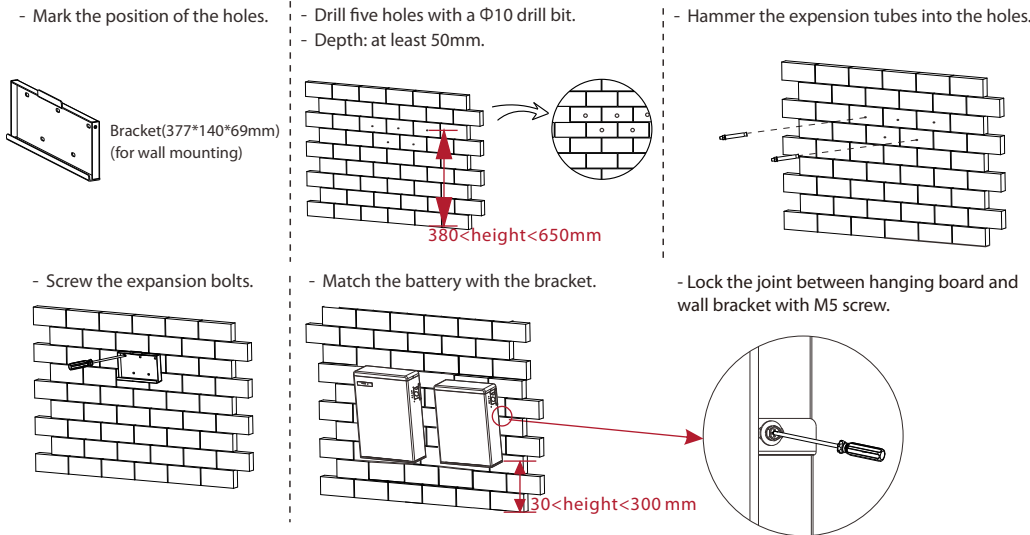
III

Battery Installation

Note: 1. For Trinity B58m + 1~3 battery mods, please finish the battery installation before connecting cables!
2. Please make sure that the inverter is completely switched off before you start connecting cables!

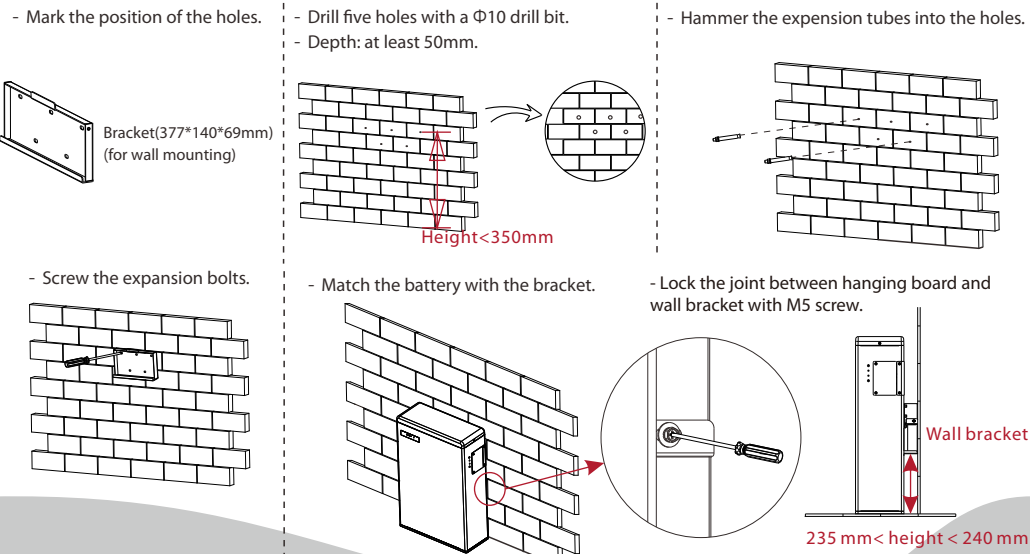
There are two installation ways, wall mounting and floor mounting.

I. Wall mounting



NOTE: 1. The distance between the bottom of the battery pack and floor shall not exceed 300mm.
2. It is recommended to keep a distance of at least 300mm between battery packs.

II. Floor mounting



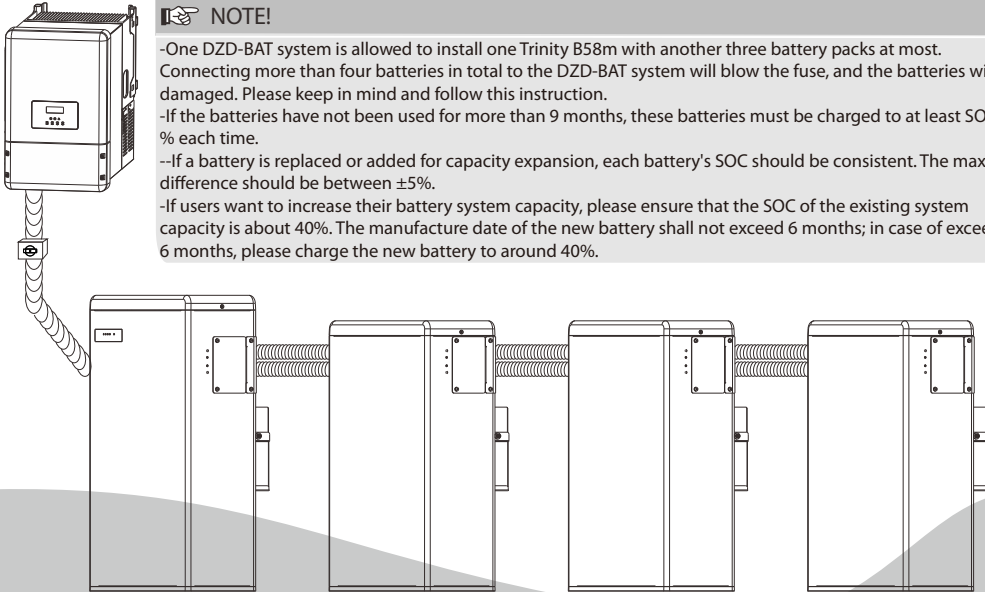
Note: To prevent the battery from becoming moist, it is recommended to place a foam cushion, or other cushion made up of other materials, with a height of 3 cm to 4 cm, under the battery.

IV

Overview of Installation

NOTE!

- One DZD-BAT system is allowed to install one Trinity B58m with another three battery packs at most. Connecting more than four batteries in total to the DZD-BAT system will blow the fuse, and the batteries will be damaged. Please keep in mind and follow this instruction.
- If the batteries have not been used for more than 9 months, these batteries must be charged to at least SOC 50 % each time.
- If a battery is replaced or added for capacity expansion, each battery's SOC should be consistent. The max. SOC difference should be between ±5%.
- If users want to increase their battery system capacity, please ensure that the SOC of the existing system capacity is about 40%. The manufacture date of the new battery shall not exceed 6 months; in case of exceeding 6 months, please charge the new battery to around 40%.



V

Overall Installation

1. Connect the cables.

2. Run the cables through the corrugated pipe.

3. do remember to insert the series-connected cable at “-” and “yplug” on the right side of last battery module to complete the internal circuit.

4. Set the cables into the groove of metal plates and screw them back to the battery module on both sides.

1

2

3

VI

Power Cable Connection

For Trinity B58m:

1. Insert the series-connected cable at “-” and “YPLUG” on the right side of Trinity B58m to make a complete the internal circuit.

For Trinity B58m + 1~3 battery packs:

1. Connect “-” on the right side of Trinity B58m/Trinity B58s to “+” on the left side of the next battery packs.

2. Connect “YPLUG” on the right side of Trinity B58m/Trinity B58s to “XPLUG” on the left side of the next battery packs.

3. The rest battery packs are connected in the same way.

4. Insert the series-connected cable at “-” and “YPLUG” on the right side of last battery packs to make a complete circuit.

1

2

Note!

Regardless of how many battery modules the user install, please put a waterproof cap on the unconnected communication port of the battery module.

VII

Power Cable Connection

1. Connect the the positive cable (+) and negative cable (-) to the BAT+ and BAT- respectively as shown in the following figure.

2. Keep the Inverter off. Connect the other end of charging cables (+,-) to the correct port on the Inverter.

1

2

NOTE

Each power cable has one terminal block connected after leaving the factory, and customers need to connect the other end of terminal block by themselves. Please refer to 4.5.2 Cable Connection Steps on User Manual page 20 to get more instruction.

VIII

Communication Cable Connection

For Trinity B58m:

1. Insert one end of the BMS communication cable without cable nut directly to the BMS port of Inverter.

2. Insert the other end of the BMS communication cable to the BMS connector; then assemble cable gland and tighten cable cap.

For Trinity B58m + 1~3 battery packs:

1. Connect RS485 II of the first battery module (as show on the right) to RS485 I on the next battery module (as shown on the left).

2. Assemble cable gland and tighten cable cap.

1

2

IX

Ground Connection

The terminal point for GND connection is on the side of grooves as shown below:

Cable size: 10AWG.

ring terminal

YPLUG

RS485 II

CAUTION!

GND connection is mandatory!

X

Commissioning

If all the battery modules are installed, follow these steps to put it in operation.

1. Remove the upper cover board of Trinity B58m;

2. Remove the small cover plate;

3. Rotate the DIP to corresponding number with small tool accroding to the number of battery pack(s) that has(have) been installed (please see the configuration on the right);

4. Switch the circuit breaker to ON ;

5. Press the POWER button to turn on the DZD-BAT system;

6. Put the small cover plate back;

7. Reinstall the upper cover board to Trinity B58m;

8. Power on the Inverter.

DIP Configuration:

0- Matching Trinity B58m (default)

1- Matching Trinity B58m + 1*Trinity B58s

2- Matching Trinity B58m + 2*Trinity B58s

3- Matching Trinity B58m + 3*Trinity B58s

1

2

3

4

5

320102028202